



*KA152 Youth Exchange*

# SALENTO REM THEATER AS ENGINE OF AWARENESS

PREPARED BY R.E.M.S



Co-funded by  
the European Union



Agenzia Italiana  
per la Gioventù



# TABLE OF CONTENTS



About the project **02**

---

Elements of mobility **03**

---

What to bring **04**

---

How to reach the venue **05**

---

Proposed timeline **06**

---

Travel refund **07**

---

Reimbursement rules **08**

---

Contact us **09**

---

# THE PROJECT

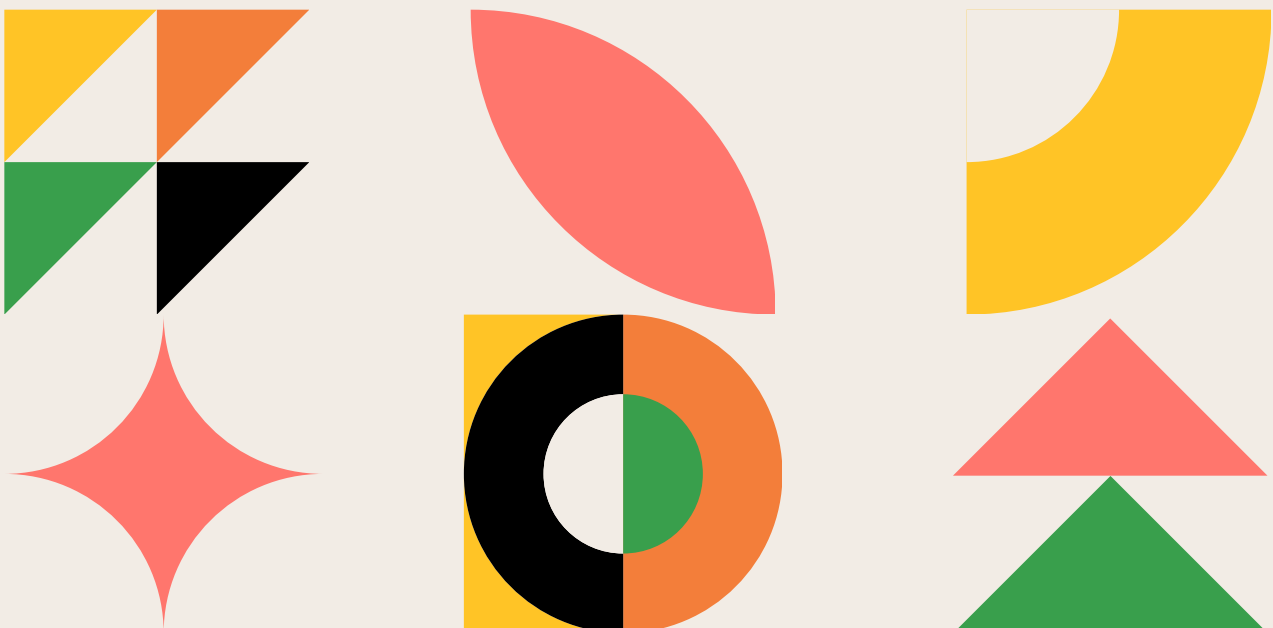
The SALENTO REM project has been devised to address issues stemming from the unconscious, inadequate, or unhealthy use of new virtual technologies through theatrical, psychological, and youth exchange dynamics. It aims to sensitize individuals and promote independence in dealing with these problems.

The project proposes the use of diverse socio-educational methodologies. These include Paulo Freire's Theater of the Oppressed and Jacob Levy Moreno's Psychodrama. These methodologies are geared towards facilitating a journey of rediscovering social values, promoting socialization, and cultivating proactive thinking.

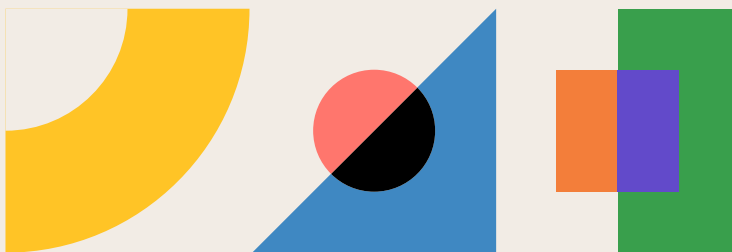
## Our group

The involved consortium comprises 6 European partners: Connect4 from Denmark, Ticket2Europe from Spain, BRIGHT from North Macedonia, Omnis Factum from Portugal, ETFYP from Croatia, and R.E.M.S from Italy, totaling 37 participants. This includes 6 group leaders and 1 facilitator from Italy.

The participant profile envisioned encompasses individuals aged 18 to 30, exhibiting a strong eagerness to engage actively in every project session.

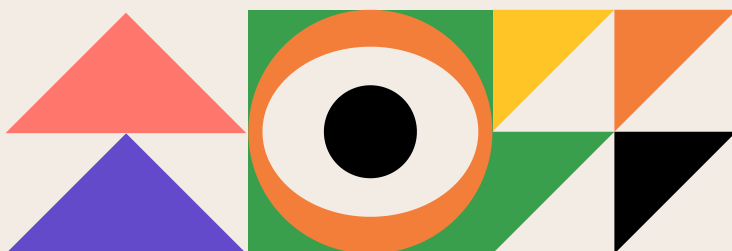


# DATES



The mobility dates are set in Italy, specifically in Lecce, for May 2024, with **arrival on May 6th, the mobility program running from May 7th to May 13th, and departure on May 14th.** Participants are confirmed to have the option of utilizing additional days to explore the region. During these extra days, travel expenses will be covered based on the total reimbursable amount from the project. In both the standard travel and green travel regimes, a total of 2 extra days are available.

# VENUE



Participants can be accommodated at **I.S.M.S. Sant'Ignazio di Loyola-Le Sorgenti**, located in the Strada Provinciale Lecce-Novoli n.23, which will be the main venue for the exchange. Link to the webpage of the stay: <https://www.emmanuel.it/>

The rooms include from two to six beds, with internal bathroom.

The structure is very large and includes multiple rooms for indoor and outdoor activities, a room suitable for lunch and dinner, a fully equipped kitchen and is well connected to the nearby city of Lecce.

# WHAT TO BRING



Bring with you objects that represent your culture, such as traditional foods, musical instruments, typical clothes, or anything else that you can share with other participants during the cultural evening.

Bring a personal notebook with you to take notes, draw or write during sessions and workshops.

If you have a musical or craft talent that you can share during the creativity workshops, bring with you the musical instrument or tools and materials needed to make your creations.

Bring along a selection of books that you like or would like to share with other participants to discuss during free time.

Bring your personal bottle with you because no disposable plastic and/or paper is used during the sessions.

Bring your personal hygiene kit and towel set with you as they are not present on site and bring with you additional medicines and/or specific components that you usually take

Bring an open mind and a willingness to learn. This project promotes knowledge sharing and collaborative learning, so be sure to bring an open mind and a willingness to learn from other participants' cultures and experiences.

# HOW TO REACH THE VENUE

Lecce is the reference city for this project. It is the second province of the Puglia region and one of the most important cities in terms of history, traditions and culture in southern Italy.



**Your arrival in Lecce can be no later than 6 pm on May 6th.**

The two main Apulian airports are in Bari and Brindisi:

## 01.

Bari takes two hours by train from Lecce. Bari airport is easily connected to the city center and the central train station.

“Bari-Karol Wojtyla Airport”:

<https://bari.airports.aeroportidipuglia.it/it/>

From the airport you can take a train to the central station and then another train to Lecce (you can buy both tickets online)

You can check train timetables and prices here:

<https://www.trenitalia.com/it.html>

## 02.

“Brindisi-Casale” Airport is the closest airport to Lecce.

A bus service connects the airport to Lecce. In 40/45 minutes it will take you to the City Terminal, just outside Lecce. The bus service operates every day from 5.40am to 11.50pm.

You can check the bus timetables and prices here: <https://bari.airports.aeroportidipuglia.it/it/puglia-airbus/>

# PROPOSED TIMELINE



## **Preparation and Organization (Pre-Mobility)**

Gathering confirmed participants and forming the group.  
Detailed communication regarding the program and logistical requirements.  
Preparation of necessary materials and resources for activities.



## **Arrival Day**

Designated day for participants to arrive at the mobility venue.  
Welcome session, introduction to the program, and explanation of mobility rules.



## **Conducting Activities**

Daily activities as per the established program.  
Workshops, cultural activities, labs, tours, etc.  
Reflection, discussions, and sharing experiences.

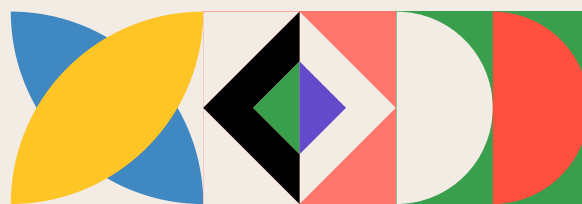


## **Departure Day**

Concluding activities, final evaluation, and participant feedback.  
Farewells, exchanging contacts, and concluding the mobility.

By adhering to this proposed timeline, we aim to ensure a well-organised and successful mobility that positively captures the group, engages the community and provides a winning experience for young people to showcase their talent.

# TRAVEL REFUND



Reference country	Amount (€)
Denmark	€320,00
Spain	€320,00
Portugal	€320,00
Croatia	€320,00
North Macedonia	€320,00
Italy	€210,00

**Note:**

The total budget for the trip of each participant in the 500-1999km range is 320 euros if it is carried out according to the green travel regime and 275 euros if it is carried out according to the standard travel regime.

The green travel with the means of transport accepted by the new procedure of the Erasmus+ Program is visible in the official guide under the heading "Budget category".



# REIMBURSEMENT RULES

According to the rules travel refunds can only be made by bank transfer to the sending Partner and based on the real costs incurred by each participant.

The transfer, after verifying the correctness and the amounts spent, will be made: **after having received all the electronic tickets (preferably) and / or by post all the original documents (receipts, invoices, original boarding passes in pdf format downloadable from the airline's website).**

**after having filled in the survey generated by the NA online through the Beneficiary Platform.**

**after producing educational material and sharing the results of the project in your local community.**

To be eligible for a refund, we ask that you keep all your original tickets, boarding passes and invoices in pdf A4 format downloaded from the airline's website.

## **Note:**

Only if you have travel tickets, original boarding passes and invoices (downloadable from the airline's website in the A4 original format), we can reimburse your travel cost.

We clearly prefer electronic tickets.

The reimbursement is done usually approx. 2 months after the mobility once you send us the originals of the tickets and took part in all the phases of the project.





# EMERGENCY CONTACT

112 is the single emergency number identified by Europe to ensure the necessary intervention. Calls to the single emergency number 112 flow into a single reference center in which all emergency calls are channeled that are made to request the intervention of the State Police, Carabinieri, Fire Brigade or Health Rescue.

## CONTACT US

### R.E.M.S

✉ [apsrems@gmail.com](mailto:apsrems@gmail.com)

☎ +39 3492833168 / +39 3279297956

📍 Via Filippo Turati 19, Cavallino (LE)





*KA152 Youth Exchange*

# SALENTO REM THEATER AS ENGINE OF AWARENESS

PREPARED BY R.E.M.S



Co-funded by  
the European Union



Agenzia Italiana  
per la Gioventù

